

3.3. CO-ORDINATE COMPARISON FOR APPROVED PLOTS

If an existing and approved plot is resurveyed, the co-ordinate comparison routine can be used to produce the required calculation records.

The DSM provides information about the approved plots in shapefile format. The approved plots (polygons) must be imported into the project that includes the re-surveyed plots.

Select Utilities, Show Duplicate Polygons. Make sure that the Method is set as follows, then

Find Duplicate Polygons

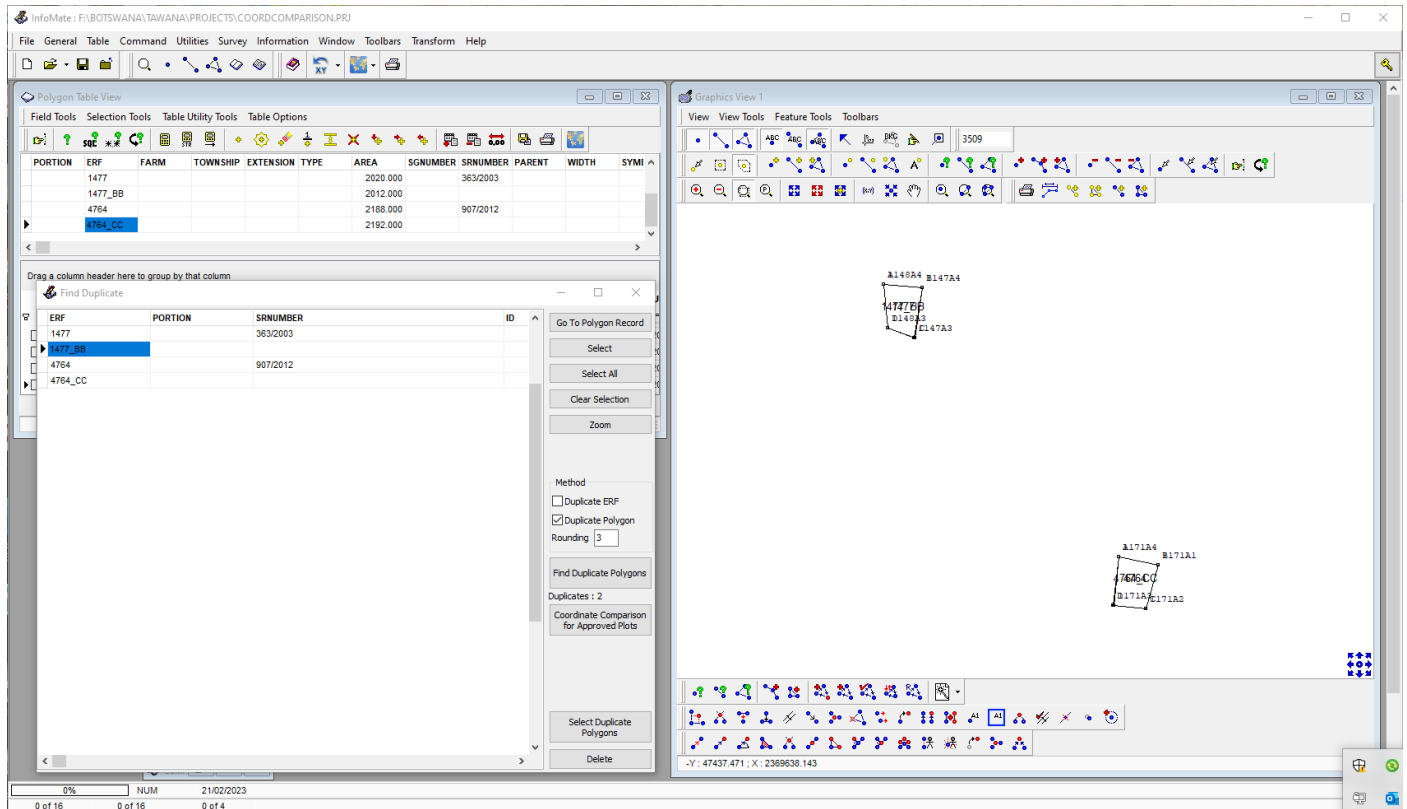
select and the duplicate polygons will be shown in the list on the left. It is not necessary to select the duplicate polygons.

Method

Duplicate ERF

Duplicate Polygon

Rounding



Coordinate Comparison for Approved Plots

Click and the co-ordinate comparison output will be sent to the calculation results window.

